



BRANAR

How to Catch a Star at The Hullabaloo



This is The Hullabaloo

The address is The Hullabaloo, Borough Road, Darlington, DL1 1SG. The Hullabaloo is a special theatre for children and families.

Sensory Key:

- The Hullabaloo is close to a main road, so you may hear lots of moving traffic nearby.

Parking:

The entrance to The Hullabaloo is on Borough Road. There are some short stay car parking spaces on Borough Road and the streets that come from it (Melland Street, Sanderson Street and Middleton Street).

Some of these spaces are unrestricted bays and can be used all day. Others are short stays for up to 2 hours. Make sure you check the signage if you are parking in any of these areas as these streets also have permit bays which won't be suitable.

Alternatively, there's a carpark just behind the theatre off Brunswick Street, that is £2 for 4 hours or £3.20 for 12 hours. This carpark uses the Connect Cashless Mobile App to pay and the code for the carpark is displayed clearly.





Other car parks can be found on Hird Street and Park Place West and these are both council run.

These are £4 per day or £1 per hour.

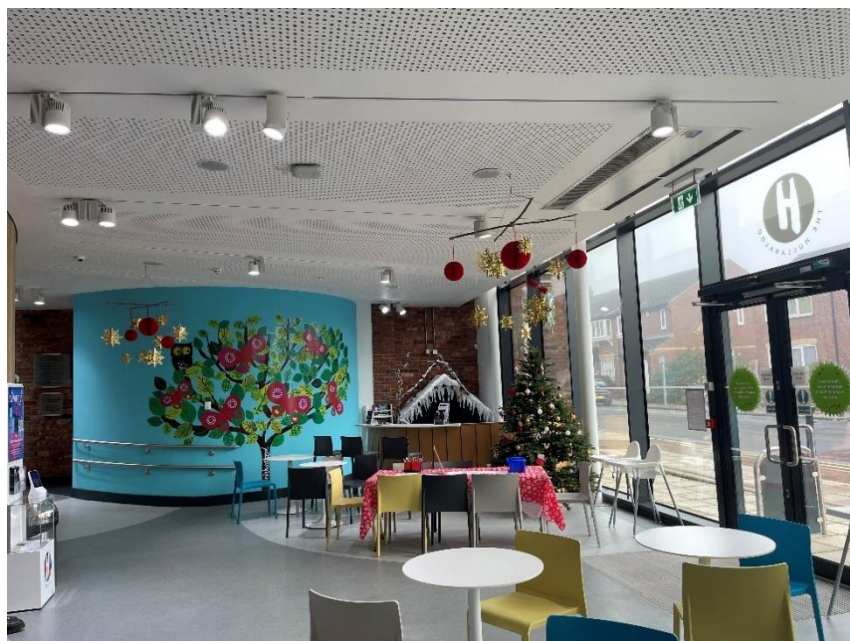
The machine accepts cash, card or contactless payments.

Please note that if using these car parks you will need to cross a busy road when walking to and from The Hullabaloo. There is a traffic light crossing opposite the entrance to Darlington Hippodrome.

When you arrive:

Press the doorbell on the front door so that staff can let you inside.

The doors will open outwards so please step back.



As you go through the main doors you will enter our café space. You will be greeted by a member of staff in a blue t-shirt. This is one of our Hullabaloo Hosts. They are available to answer any questions you might have and to show you where you need to go.

This image shows an empty café. When you visit The Hullabaloo, there will be a Christmas tree and other decorations over in our story corner and hanging from the ceiling.

Sensory Key

- You might smell strong food and drink smells in the café as the staff prepare orders for other people.
- You may hear the sound of the doorbell when other people arrive.
- This area may become crowded as more people arrive for the show and to use our Creative Play space.

Box Office:

If you need to collect your tickets, they will be available from our Box Office situated in our main café space. A member of staff will be on hand to greet you and hand over your tickets before the performance starts.

**Sensory Key**

- At the Box Office and around our café space, you may hear a phone ringing from behind the desk.

Toilets:

There is one accessible toilet in The Hullabaloo and more available directly next door at Darlington Hippodrome. These accessible toilets have space for a wheelchair but do not have hoists in place. Other toilets are available at The Hullabaloo.



In our Theatre Space:

This is where you will see *How to Catch a Star*.

An announcement will be made in the café space when the theatre is open. Another announcement will then be made inside the theatre with further information once the show is about to start.

This entrance is accessed via a staircase. If you are unable to or struggle to use stairs, we also have an accessible entrance at the front of the theatre which is wheelchair friendly. Staff will be on hand to help you if you need to use our front entrance.

Seating for this performance is unallocated, so you are free to sit wherever you want. A member of staff will be on hand if you have any queries.



About *How to Catch a Star*

Once there was a boy who was always looking up.

He loved stars so much that he dreamt of having one as his friend.

This is the story of his adventure.

Combining spell-binding storytelling with puppetry and magical music, ***How to Catch a Star*** is a festive treat from the award-winning Branar which reminds us all to follow our dreams.

This is a non-verbal show suitable for everyone aged 3 years +

Once everyone is in the Theatre and in their seats, ready to watch ***How to Catch a Star***, the show will begin.

Sensory Key

- Children and adults may show their excitement about the show beginning.
- When the show is about to begin, the lights will dim slightly. It will not go completely dark; you will still be able to see.



You will be able to look at the puppets, but you will not be able to touch them due to how fragile they are.

It is fine to talk to the people you are sitting with about what is happening in the performance, but please be mindful of others in the space.

It is fine for you to leave the theatre space during the performance if you need to and you can come back in and watch the rest of the show when you are ready.

Sensory Key

- At the end of the performance, you may hear clapping from the audience to show that they have enjoyed watching the performance. You can join in if you want to.



We hope you enjoy the story of **How to Catch a Star** and have a lovely time visiting The Hullabaloo.

Wishmas Forest at The Hullabaloo



This is our outdoor space where you can visit our Wishmas Forest. A member of staff in a blue t-shirt will be on hand to show you around the space and will explain the activity.

Wooden stars will be available for you to decorate with various materials including coloured pens and stickers. This activity will take place in our winter cabin around a table.

Once you have decorated your star, you can either hang this up on one of our Christmas Trees or you can take it home with you.

Sensory Key:

- You will be able to hear Christmas music playing in the background through a speaker whilst you are outside visiting our Wishmas Forest.
- If there is anything that we can do to make your visit more comfortable, please do ask one of our Hullabaloo Hosts. We hope to welcome you to The Hullabaloo again soon.