

Theatre Hullabaloo presents

# Hullabaloo

in the

# Park

FAMILY  
FESTIVAL

July 26-30 2023

South Park, Darlington

## Festival Guide

[theatrehullabaloo.org.uk](http://theatrehullabaloo.org.uk)

# Welcome to Hullabaloo in the Park 2023!

Join us for Hullabaloo in the Park, a fun-filled outdoor family festival packed with brilliant things to create, see and do together.

Taking place from 26 - 30 July 2023, the festival will transform Darlington's beautiful South Park into a magical land full of fantastic activities - from live performance to messy play, storytelling to circus, audio adventures to crafting – and even a Beastie Boogie!

Ideally suited for your little bugs and beasties aged 0-10 years and all their family and friends, Hullabaloo in the Park is an explosion of fun and creativity for everyone to enjoy.

This guide provides information to help you get the most out of your time at the festival.

We cannot wait to see you there!

## Daily festival times:

Wednesday 26 July	10am until 4pm
Thursday 27 July	10am until 4pm
Friday 28 July	10am until 4pm
Saturday 29 July	10.30am until 4.30pm
Sunday 30 July	10.30am until 6pm



For any activities that have been booked with a time allocation, we recommend arriving 10 minutes before the event start time.



Lots of fun!



# Contents

<b>About the festival</b>	04
Stages / Map	04
Meet our staff- who to ask for help / Lost and found children points	05
First aid and welfare / Looking after the site / What to bring / What not to bring	06
<b>The Programme</b>	07
<b>Tickets</b>	07
Booking tickets / Collecting and checking tickets / Latecomers / Refunds.	08
<b>Getting to South Park</b>	09
Directions	09
<b>Additional access requirements</b>	10
Disabled parking / Wheelchair access / Disabled toilets	10
Assistance dogs / British Sign Language (BSL) / English as a second language	11
Neurodiverse friendly performances and activities	12-13
Companion tickets / Contact us	14
<b>Family facilities</b>	15
Buggies / Baby-changing and breastfeeding facilities	15
Food & Drink / Wet weather plan / Cancelled event	16
<b>Keeping you little ones safe and happy at Hullabaloo in the Park</b>	17
Lost child points / Free wrist bands	17
Stay together / Dress for the Great British Weather / Don't leave your kids	18
<b>Contact Us</b>	19
Before the festival / During the festival / Question about tickets?	19



# About the festival

## Stages

Welcome to Hullabaloo in the Park 2023. This year, the festival will take place across 10 areas of the park, all named after our favourite bugs & beasts. During your time at the festival you will see signs for the areas (or "stages") so look out for:



**Beetle Stage**



**Dragonfly Stage**



**Snail Stage**



**Bumblebee Stage**



**Firefly Stage**



**Spider Stage**



**Butterfly Stage**



**Grasshopper Stage**



**Worm Stage**



**Caterpillar Stage**



**Ladybird Stage**



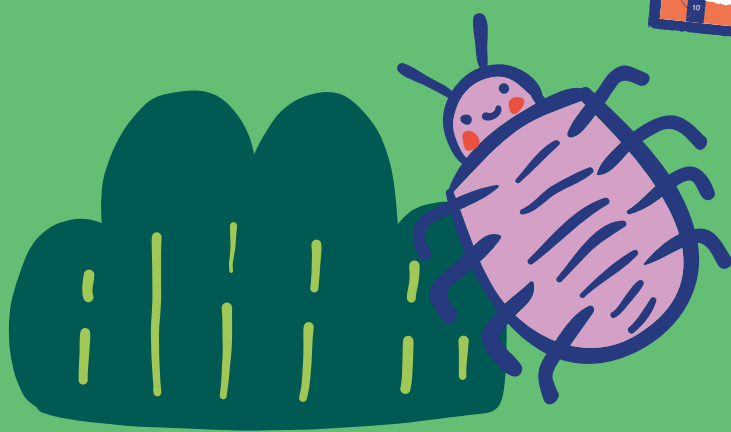
**And, of course,  
our Hullabaloo Hubs  
at each entrance**

The programme guide will tell you where to go for each activity and there is a map to show you where everything is. If you're not sure, ask one of our friendly festival staff who will point you in the right direction.

## Map

This map shows you where all of our festival activity will take place as well as including key information on the facilities available.

As a guide, it takes approximately 10 minutes to walk from the main Hullabaloo Hub at the Parkside Entrance to the Firefly Stage/Victoria Embankment Entrance, although this might be longer with little legs and via a step-free route.



## Meet our staff - who to ask for help

We have a really wonderful team of staff and volunteers supporting Hullabaloo in the Park and they'll be wearing brightly coloured branded t-shirts - you can't miss us!

The main Hullabaloo Hub is located near the Parkside Entrance - this is your first port of call with any questions or problems (and to collect your tickets!) and our friendly welcome team will be on hand to help.

There is also a hub at the Victoria Embankment entrance. You will not be able to purchase tickets here, but there will be information and friendly faces to greet you.



## Lost and found children points

If you have lost your child please make a member of festival staff aware as soon as possible, then make your way to either of the Lost Child points identified on the map (there is one at the Parkside Entrance and one near Victoria Embankment entrance).

We suggest that families show older children the lost child point on the map and point it out in person, making a clear plan on what to do if a member of the group becomes lost. Let all children know that if they become lost, they should find someone in a festival branded t-shirt who will help them. Tell them they will then be taken to a meeting point to find their adult.

Similarly, if you see an unaccompanied child, please make festival staff aware immediately.

Children are the responsibility of their parent or carer at all times.





## First aid and welfare

If you become unwell, inform our dedicated Hullabaloo in the Park staff in branded coloured T-shirts and they will be on hand to offer assistance or make your way to the first aid point shown on the map. This is located at the Welfare Tent near South Park café. We have qualified medics on site to provide first aid immediate response.

There will also be access to necessities here like suncream, in case you forget yours.

## Looking after the site

We're really excited to be using the beautiful South Park for our festival and we intend to leave it exactly as we found it. Please help us by taking your rubbish home or disposing of any rubbish in the council bins provided in the park.

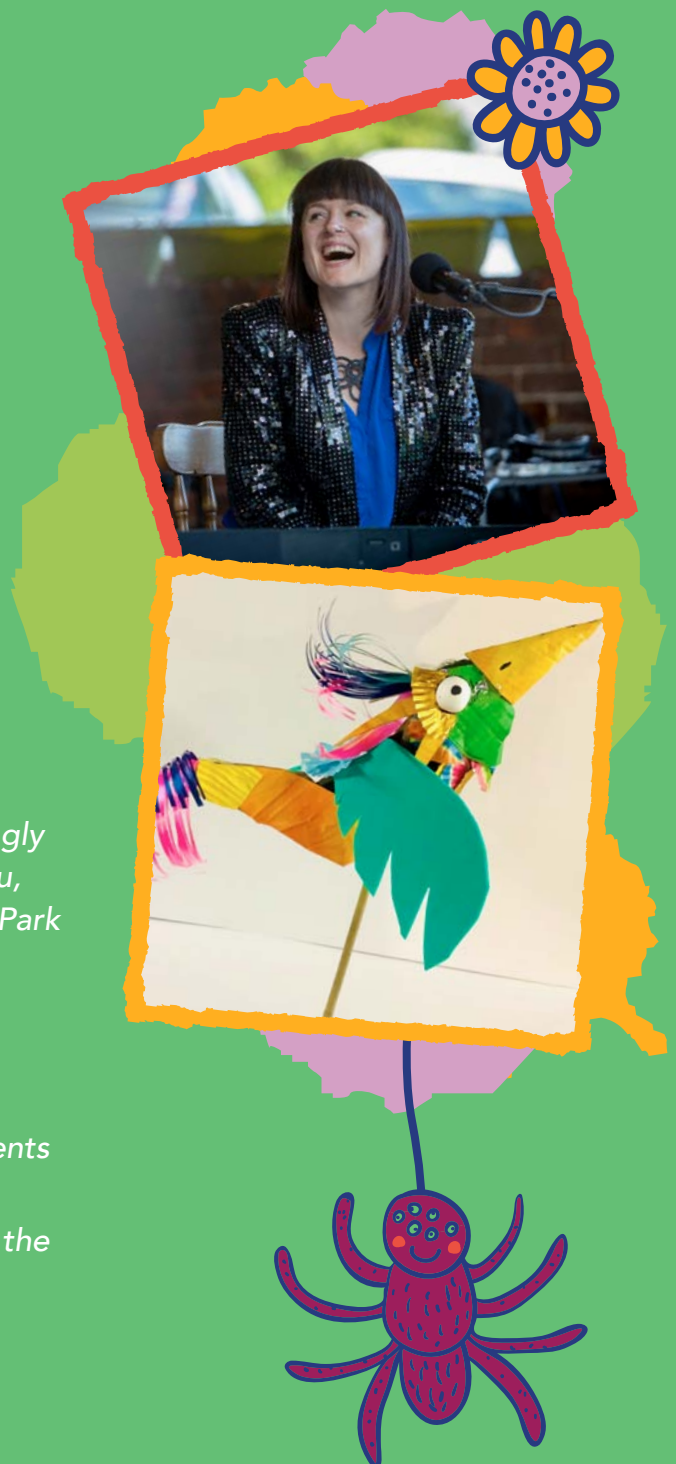
## What to bring

This list isn't essential, however we do recommend bringing the following if you are able to.

- Suncream
- Sun hats
- Water bottles
  - bring plenty as unfortunately we don't have access to fill up water bottles
- Waterproofs
- Picnic blanket

## What not to bring

- Dogs and other animals
  - if you are attending an event at the festival, please leave your furry friends at home. We strongly advise that you do not bring a dog along with you, unless they are assistance dogs. However, South Park is a public park so there will be dogs in the area.
- Alcohol
  - please do not bring alcohol to any festival events
- Barbeques
  - please do not bring barbeques to any festival events
- Glass
  - broken glass is unsafe for children and animals in the park so please don't bring any with you
- Anything illegal
- Fireworks
- Sound systems



# The programme

This year our festival programme is packed full of fun for you and your family to enjoy. There's a mixture of performances that you will need to book a ticket for and free drop in activity.

For full programme information visit our website

**[theatrehullabaloo.org.uk/hullabaloo-in-the-park](http://theatrehullabaloo.org.uk/hullabaloo-in-the-park)**

## Tickets

At Hullabaloo in the Park, we offer a broad range of activities and performances for children aged 0-10 and their families. Some of these activities will require you to book and pay for a ticket in advance, so you and your children can have fun together.

Information on which events and activities require a ticket can be found on our website

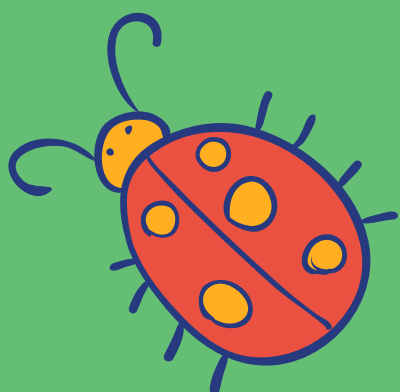
**[theatrehullabaloo.org.uk/hullabaloo-in-the-park](http://theatrehullabaloo.org.uk/hullabaloo-in-the-park)**

We also have a daily programme of free, non-bookable activities that are on a drop-in, first come first served basis. Again, check out our website to find out more about these.

**You do not need a ticket to enter the park or enter the festival site.**

You're very welcome to drop in and soak up the festival atmosphere and there'll be plenty for you to do with or without a ticket. However if you do want to join us for the shows and workshops, we advise booking early to avoid any disappointment for specific performances/activities or times you wish to attend before they sell out.

Some activities are free and have a mixture of bookable and drop in sessions. We have identified some bookable slots for free activities across the festival to allow families to book in advance if they wish to, as we understand that sometimes this makes for an easier experience with small children. The activity across these sessions will be the same in both the bookable and drop-in sessions.



## Booking tickets

You can book tickets by visiting our show pages on the website:

**[theatrehullabaloo.org.uk/hullabaloo-in-the-park](http://theatrehullabaloo.org.uk/hullabaloo-in-the-park)**

Or by calling the box office on 01325 405405

Or by visiting the box office in person. We share a box office with Darlington Hippodrome so on days when there is not a show on at The Hullabaloo, you will need to go through to the desks at Darlington Hippodrome.

The box office is open 10am-6pm, Monday-Saturday, for phone call and in person bookings.

## Collecting and checking tickets

Bookable sessions will have a ticketing system in operation. This is to provide the best possible experience with smaller audiences or limited capacities.

Please give your name to the member of staff in that area and they will tick you off a list. There is no need to collect your ticket from the box office and there is no need to print off your ticket for any of these events. We will have your name on a list and will be ready to welcome you in.

## Latecomers

If you do arrive late, see our Hullabaloo in the Park festival staff who will check your tickets and advise if it's okay to enter the space. You may have to wait until an appropriate point in the show to avoid too much disruption, but we will do our best to let you in.

## Refunds

If you are unable to attend a performance or activity, we can either change your ticket for a different show at this year's festival or put credit on your account to book a ticket in future. Credit can only be used on future shows and events at The Hullabaloo. To receive credit, you must let us know at least 24 hours before the show starts. After that time, we are not able to change your ticket or offer credit. We are unable to offer refunds.





# Getting to South Park



South Park is in Darlington and is a grade II registered historic park. There are several entrances to the park, the main entrance is on Parkside (use postcode DL1 5TG).

There will be a Hullabaloo in the Park Festival Hub near this entrance where you can get all of the information you need about the festival and to book your tickets.

The Parkside entrance is the best entrance to use for the festival. There is another entrance near Victoria Embankment (use postcode DL1 5JS). There will be a festival information point here however you will need to go up to the Parkside entrance to book tickets if you don't already have them.

Wherever possible we encourage families to walk on foot, cycle, use public transport or car share to attend the festival.

## Directions

### Road

Use the postcodes above to direct you to the most appropriate entrance.

### Train

It's easy to get to South Park from Darlington railway station; use the Victoria Road Exit at the train station; walk from the station, down Victoria Road then left down Victoria Embankment. You can then follow the signs up towards South Park café where you will see the main Hullabaloo in the Park Hub.

### Bus

South Park is accessible by bus - for more information please visit [Traveline North East travelinenortheast.info](http://TravelineNorthEast.travelinenortheast.info)

### Cycling

There are cycle paths linking from the town centre through Polam Lane onto South Park. Cyclists can access most areas of the park as usual, however we ask cyclists not to cycle in the play area or the main bowling green.

### Parking

Due to limited car parking around South Park we recommend you use the town centre car parks and access the park by foot through Victoria Embankment and walk to the Hullabaloo Hub near the clock tower / café area.

# Additional access requirements

## Disabled parking

Blue badge holders should follow the usual guidelines around parking, and it is the responsibility of the badge holder to park appropriately.

There are some disabled parking spaces the Parkside Entrance to the park.

As a blue badge holder you may be entitled to park on the double yellow lines outside of all entrances to South Park providing there are no loading restrictions in that area, allowing you to park here for up to 3 hours when displaying the timeclock and badge. Blue badge holders cannot park in loading/unloading bays.



## Wheelchair access

All of the performance spaces ("stages") are wheelchair accessible. There are concrete paths all the way around the park and there will be plastic flooring on any grassed areas needed to access activity.

The accessible step-free routes (for wheelchairs and buggies) have been identified on the Festival Map but if you are unsure, just ask one of our lovely festival staff members and they can assist you. It may take longer to use the step-free routes around the park, so you may need to allow for a little extra time to arrive for a performance or activity.

## Disabled toilets

South Park and all of the permanent facilities within it are managed by Darlington Borough Council. This includes the toilets and café. There is one ungendered accessible toilet in this toilet block and you may need a key from the café to access this.

In addition to the toilets provided by the council, there will be portaloos available for festival go-ers, including a wheelchair accessible toilet. These toilets will be towards the Victoria Embankment entrance. See the map for more information.



## Assistance dogs

Assistance dogs are welcome across the whole the festival. If you need any more information on potential triggers for an assistant dog (food, puppets, loud noises), please see a member of the festival staff team or contact us in advance by emailing [info@theatrehullabaloo.org.uk](mailto:info@theatrehullabaloo.org.uk) or calling us on 01325 405680.

## British Sign Language (BSL) Interpreted and non-verbal performances



We have one show in this year's programme that has integrated BSL, meaning that the interpreter is also a performer so will be signing in the show rather than standing to one side. We hope this makes the experience more inclusive for everyone.

The show is Hare & Tortoise. More information can be found here - [theatrehullabaloo.org.uk/shows/hare-and-tortoise](http://theatrehullabaloo.org.uk/shows/hare-and-tortoise)

There are also shows in the programme that are largely, if not fully, non-verbal, allowing D/deaf or hearing impaired audiences to join the experience as well as those where English is not a first language. These shows are:

Early Weaves

[theatrehullabaloo.org.uk/shows/early-weaves](http://theatrehullabaloo.org.uk/shows/early-weaves)

Look Mum, No Hands!

[theatrehullabaloo.org.uk/free-shows/look-mum-no-hands](http://theatrehullabaloo.org.uk/free-shows/look-mum-no-hands)

## English as a second language

As mentioned above, there are some shows that have no or very little spoken word, so these would be suitable for non-English speaking audiences or audiences where English is not their first language.

We will also have some activities interpreted into different languages in order to allow wider access to the festival for audiences across Darlington.

We aim to have following activities translated into Polish, Farsi and Bengali.

- **Free drop-in craft activities**
  - 10 different activities across the festival,  
2 different crafts each day
- **Elswyth's Shed audio experience**



## Neurodiverse friendly performances and activities



Although we hope the festival will be accessible to all, we do have specific “neurodiverse friendly performances” where families with additional needs might feel more comfortable.

The performances will not have been changed from the standard version, but by identifying it as “neurodiverse friendly” we hope to provide an inclusive environment where parents and families feel comfortable in that space no matter what their needs. This is because, in theory, every family in that performance has experience with neurodiversity in some form and may be more familiar with the behaviours within these families e.g. more noise or movement. However, the show itself, is exactly the same as a standard performance.

Anyone is welcome to book tickets for any show or activity that they feel is suitable for them and their family. If they have a neurodiverse child, they do not have to attend the identified “neurodiverse friendly performance” show. Similarly, you do not have to have a neurodiverse person in your group to attend a “neurodiverse friendly” show.

We have three specific neurodiverse friendly activities in the 2023 festival programme and these are:

Egg & Spoon - performance. Saturday 29 July • 11am

[theatrehullabaloo.org.uk/shows/egg-and-spoon-2](https://theatrehullabaloo.org.uk/shows/egg-and-spoon-2)

Hare & Tortoise - performance. Wednesday 26 July • 11.30am

[theatrehullabaloo.org.uk/shows/hare-and-tortoise](https://theatrehullabaloo.org.uk/shows/hare-and-tortoise)

Giant's Picnic - play space

[theatrehullabaloo.org.uk/shows/giants-picnic-ndf](https://theatrehullabaloo.org.uk/shows/giants-picnic-ndf)

For the neurodiverse friendly group sessions for our Giant's Picnic, we're offering a 45-minute slot on each of the days which enables up to 4 families (where at least 1 child in the family has a neurodiverse condition) to enjoy an adapted session.

The adaptations in this case are reduced numbers, a fixed 45 minute time slot and a specific staff member to support this session. Because this is a group session, it is likely to mean that the session includes groups of people who are familiar, so you can investigate the space in your own time.



In addition to the specific neurodiverse friendly sessions listed above and marked on the website, we hope that families will find a range of activities at the festival to entertain them at an appropriate level.



We know from families that engage with us at The Hullabaloo that one of the barriers to attending activities with a neurodiverse child is often around having a specific time to arrive and participate in an activity. For this reason, we have identified bookable slots for some of our free activity to allow you to plan your visit. These sessions aren't neurodiverse friendly specific shows but are activities to book into as one family group.

These activities are:

Hidden Treasures

[theatrehullabaloo.org.uk/shows/hidden-treasures](https://theatrehullabaloo.org.uk/shows/hidden-treasures)

Elsbeth's Shed audio experience

[theatrehullabaloo.org.uk/shows/elsweths-shed](https://theatrehullabaloo.org.uk/shows/elsweths-shed)

Happy Hammer Hapa Zome

[theatrehullabaloo.org.uk/shows/happy-hammer-hapa-zome-2](https://theatrehullabaloo.org.uk/shows/happy-hammer-hapa-zome-2)

Tickets for all of the activities mentioned above can be booked as standard via the box office in person, on the phone 01325 405405 or online

[theatrehullabaloo.org.uk/hullabaloo-in-the-park](https://theatrehullabaloo.org.uk/hullabaloo-in-the-park)

For the neurodiverse friendly sessions in particular, we are able to offer the following:

- pre-show information is available to help you prepare for your visit. This will include more details about the show, for example, if puppets are used, if there is a flashing light sequence, if there are any sudden loud noises. Where possible, we will also include a Visual Story for the show itself. Visual stories are currently available for Look Mum, No Hands!, Hidden Treasures and The Lost Feather.

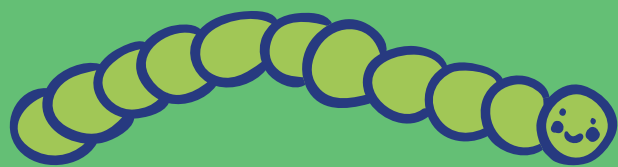
[theatrehullabaloo.org.uk/free-shows/look-mum-no-hands](https://theatrehullabaloo.org.uk/free-shows/look-mum-no-hands)

[theatrehullabaloo.org.uk/shows/hidden-treasures](https://theatrehullabaloo.org.uk/shows/hidden-treasures)

[theatrehullabaloo.org.uk/shows/the-lost-feather](https://theatrehullabaloo.org.uk/shows/the-lost-feather)

- you can peek into the performance space and meet the performers before the show begins (pop us an email to [info@theatrehullabaloo.org.uk](mailto:info@theatrehullabaloo.org.uk) to arrange this in advance).

If you want any further information on any of our shows to be able to decide if the show is suitable for your young person, then please get in touch with us on 01325 405680 or [info@theatrehullabaloo.org.uk](mailto:info@theatrehullabaloo.org.uk) and we can have a further discussion.





## Companion tickets

Companion tickets are for adults with a registered disability who wish to bring another adult to assist and support them in bringing their child(ren) to a performance. A disabled adult is entitled to one free companion ticket.

If you are a disabled adult and are entitled to a complimentary Companion ticket to enable you to bring your child to an activity or show at Hullabaloo in the Park, you can book this ticket with the box office.

Because these tickets are complimentary, they are not available to book online. Instead, these tickets must be booked by contacting our Box Office either in-person or over the phone on 01325 405405.

## Contact us

If you'd like to contact and discuss your additional needs or the needs of someone in your group email us on [info@theatrehullabaloo.org.uk](mailto:info@theatrehullabaloo.org.uk) or call the office on 01325 405680.



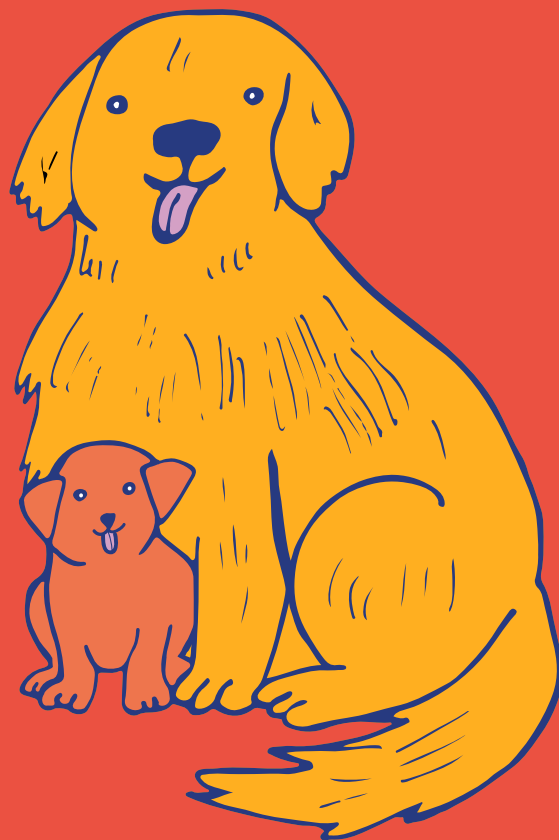
# Family facilities

## Buggies

All of the performance spaces ("stages") are accessible to buggies. There are concrete paths all the way around the park and there will be plastic flooring on any grassed areas needed to access activity by buggies and wheelchairs.

The accessible step-free routes (for wheelchairs and buggies) have been identified on the Festival Map but if you are unsure, just ask one of our lovely festival staff members and they can assist you. It may take longer to use the step-free routes around the park, so you may need to allow for a little extra time to arrive for a performance or activity.

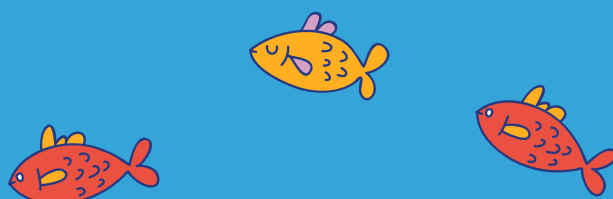
When taking part in activities or watching a performance there will a dedicated space to leave any buggies, however, we recommend always keeping any valuables with you as you will be responsible for keeping them safe.



## Baby-changing and breastfeeding facilities

South Park and all of the permanent facilities within it are managed by Darlington Borough Council. This includes the toilets and café.

We are a breastfeeding-friendly event with a pop-up tent near the Victoria Embankment entrance to provide a more welcoming and comfortable area. All feeding parents and carers are welcome in this space, however you feed your baby.



## Food and drink

On the festival map you will see our Family Picnic Area where you're welcome to join us for a little break from all the fun. Bring your own picnic or buy whatever you like from the café or from vendors on site, and join us on the grass down near the embankment entrance. If you are bringing your own picnic, please do not bring any glass as broken glass is very dangerous for children and animals using the park. We will have few blankets and mats to sit on, or you might like to bring your own. It's up to you.

South Park has a café that is run by Darlington Borough Council, situated by the bowling green. The café is open 10am-5pm Monday to Friday, 9am-5pm on Saturday and 9am-5pm on Sunday. There will be a range of hot and cold drinks, sandwiches, snacks and ice-creams available daily.

There is an accessible ramp to the left-hand side of the cafe.

Please note: you will not be able to take any hot drinks into a baby show for safety reasons.

Unfortunately, we do not have access to a water point to enable you to refill water bottles so please make sure you have plenty with you.

## Wet weather plan

Hullabaloo in the Park is an outdoor festival, so please expect the Great British Summertime and prepare accordingly. So think umbrellas and raincoats as well as suncream and hats!

In the event of undesirable weather which means it is unsafe for events to proceed, for example heavy rain or strong winds, we will try to relocate performances and events to The Hullabaloo where possible. Wherever possible, we aim to contact all ticket holders 12 hours in advance should this be necessary, so please confirm that we have contact details for your group and we will be in touch if needed.

Updates will also be posted on our social media pages.

## Cancelled event

If we do need to cancel an event, for reasons including bad weather, then refunds will be offered if we are unable to relocate it to The Hullabaloo. Please note that we will only stop the festival in very extreme circumstances and hope to go ahead whenever we can.





# Keeping your little ones safe and happy at Hullabaloo in the Park



We love making a Hullabaloo and we hope that you and your littlest Hullabaloo'ers will have lots of fun and adventures with us when you come to Hullabaloo in the Park.

We also want to make sure that everyone feels safe and happy, so here are some top tips for attending the festival.

## (1) Lost child points

You will find our Lost Child Points at the Festival Hubs located inside the Victoria Embankment and Parkside entrances to the park. Make sure you tell your children that this is a safe place to go if they get separated from you and point out the 'safe adults' in the bright orange steward t-shirts.

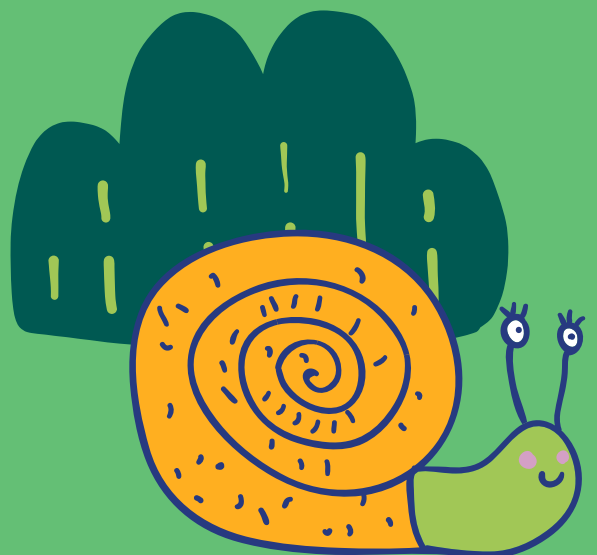
Explain that the Hubs are the place 'where the friendly staff will give you stuff to play with while you wait for Daddy to come and get you'..., etc. Going and talking to the Stewards and Lost Kids staff teaches your child that they are friendly and approachable and will make them feel more comfortable asking for help if they need it.

## (2) Free wristbands

We will have free wristbands at both Festival Hubs which you are welcome to pick up when you arrive.

DO write your mobile number(s) on your child's arm out of sight or INSIDE their wristband with a permanent marker.

DO NOT write the child's name on the wristband as it could be used to gain the child's trust. And remember that mobile phones are useless as a contact method if you don't hear them, they are out of battery, or they simply don't have network coverage, so make sure yours is fully charged and ready to ring.





### (3) Stay together

Enjoy the festival programme together as a family. 90% of reported lost children is when parents 'nip to the loo' or 'arrange to meet them by the cafe in ten minutes' - kids lose their nerve quickly, so do stuff together.

### (4) Dress for the Great British Weather

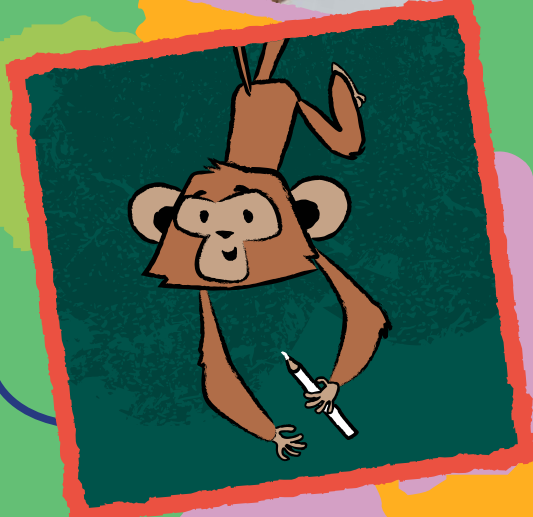
There is so much fantastic stuff to do at Hullabaloo in the Park that you should be prepared to come and stay all day. Don't forget to put high factor suncream on as there isn't a lot of shade in the park, bring your funkiest sun hats and don't forget your water bottles.

If it looks like rain, don't forget to bring a waterproof and umbrella - we'll still have lots of fun unless its torrential.

### (5) Don't leave your kids

Hullabaloo in the Park is designed to have lots of wonder-filled creative things to do for you to enjoy with your children, so make sure you are playing and crafting alongside your little ones.

Most important of all, have fun and stay safe!





# Contact us

## Before the festival

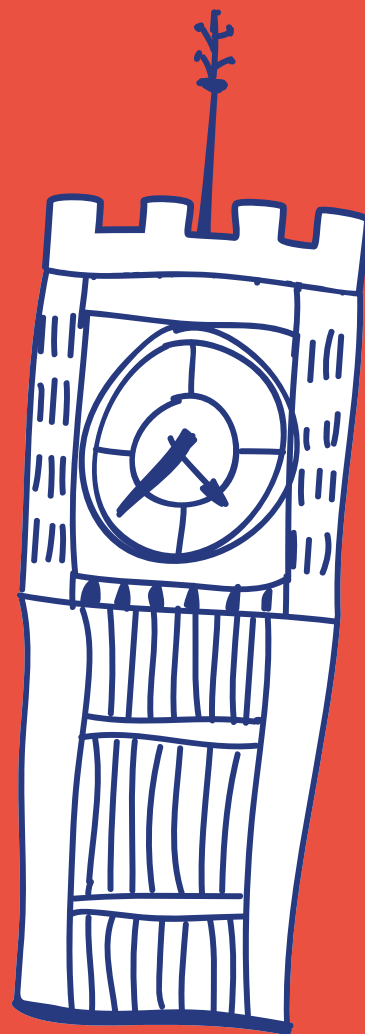
If you have any questions or queries regarding Hullabaloo in the Park before the week of the festival, we can be contacted on our usual email address [info@theatrehullabaloo.org.uk](mailto:info@theatrehullabaloo.org.uk) and phone number.

## During the festival

If you need to contact us about the festival between Wednesday 26 and Sunday 30 July 2023, please email us at [info@theatrehullabaloo.org.uk](mailto:info@theatrehullabaloo.org.uk) or call our friends at Darlington Hippodrome on 01325 405405 who will be able to help with ticket queries.

## Questions about tickets?

Please always contact the box office for queries around tickets. You can call them on 01325 405 405 or visit them at Darlington Hippodrome between 10am and 6pm.



[theatrehullabaloo.org.uk](http://theatrehullabaloo.org.uk)